



TO LET

Glendale Gardens, Leigh-On-Sea SS9 2AY

£995 PCM

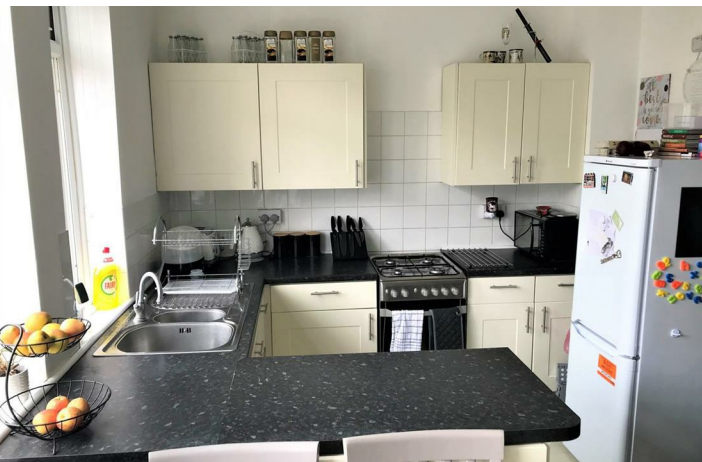
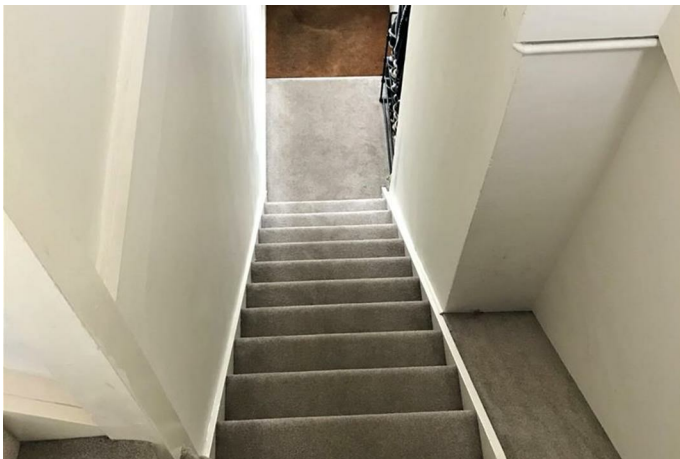
- First Floor Flat
- Central Leigh on Sea
- Private Entrance
- Allocated Parking
- Open Plan Kitchen
- Large Living Room
- Two Double Bedrooms
- Gas Central Heating (n/t)
- Double Glazed
- Council Tax Band - A

Appointmoor Rental 72 The Ridgeway,
Chalkwell, Westcliff, Essex, SS0 8NU
T. 01702 719 966 W. appointmoor.co.uk

appointmoor

Description

Appointmoor Estates have available to rent in central Leigh on Sea is this LARGE two bedroom first floor flat with its own private entrance and ALLOCATED PARKING. The property consists of a large open plan lounge/kitchen which includes all appliances. TWO DOUBLE BEDROOMS. Modern fitted bathroom with a shower over the bath. Gas central heating (n/t). Double glazed throughout. Call our lettings team for further details.



Energy Efficiency Rating		
	Current	Potential
Very energy efficient - lower running costs		
(92 plus) A		
(81-91) B		
(69-80) C		
(55-68) D		
(39-54) E		
(21-38) F		
(1-20) G		
Not energy efficient - higher running costs		
	51	78
EU Directive 2002/91/EC		
England & Wales		

Environmental Impact (CO ₂) Rating		
	Current	Potential
Very environmentally friendly - lower CO ₂ emissions		
(92 plus) A		
(81-91) B		
(69-80) C		
(55-68) D		
(39-54) E		
(21-38) F		
(1-20) G		
Not environmentally friendly - higher CO ₂ emissions		
	48	81
EU Directive 2002/91/EC		
England & Wales		